



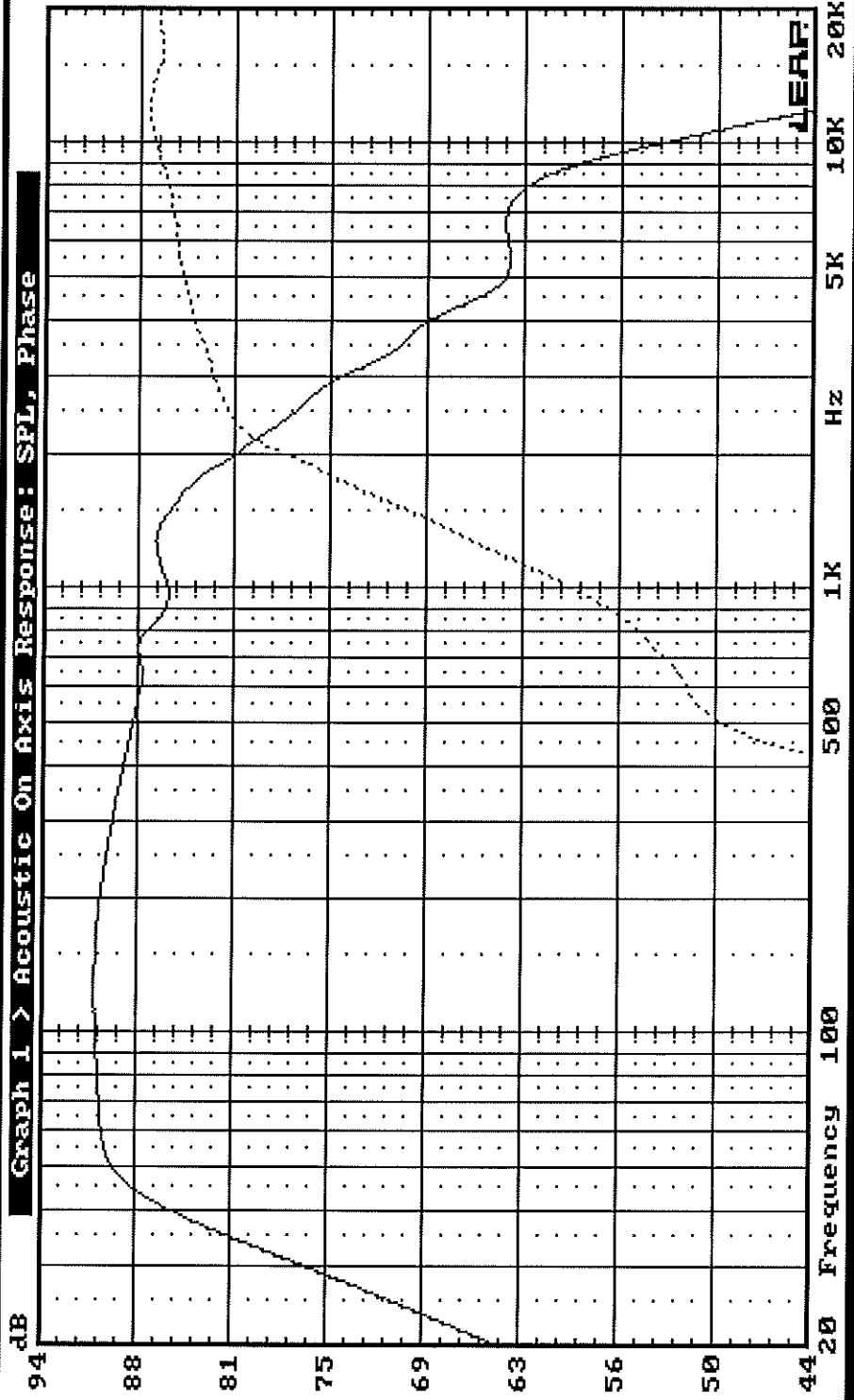
Loudspeaker Enclosure Analysis Program
Ver 4.60, (C)1994 LinearX Systems Inc

DGL Library:
SILVER-4.DGL

Oct 17 2014
Fri 2:23PM

— DGL Entry:14, Name:U20RC38-08 TZD SPLD

..... DGL Entry: 8, Name:XT25TG30/4 VZD SPLD



W+T-



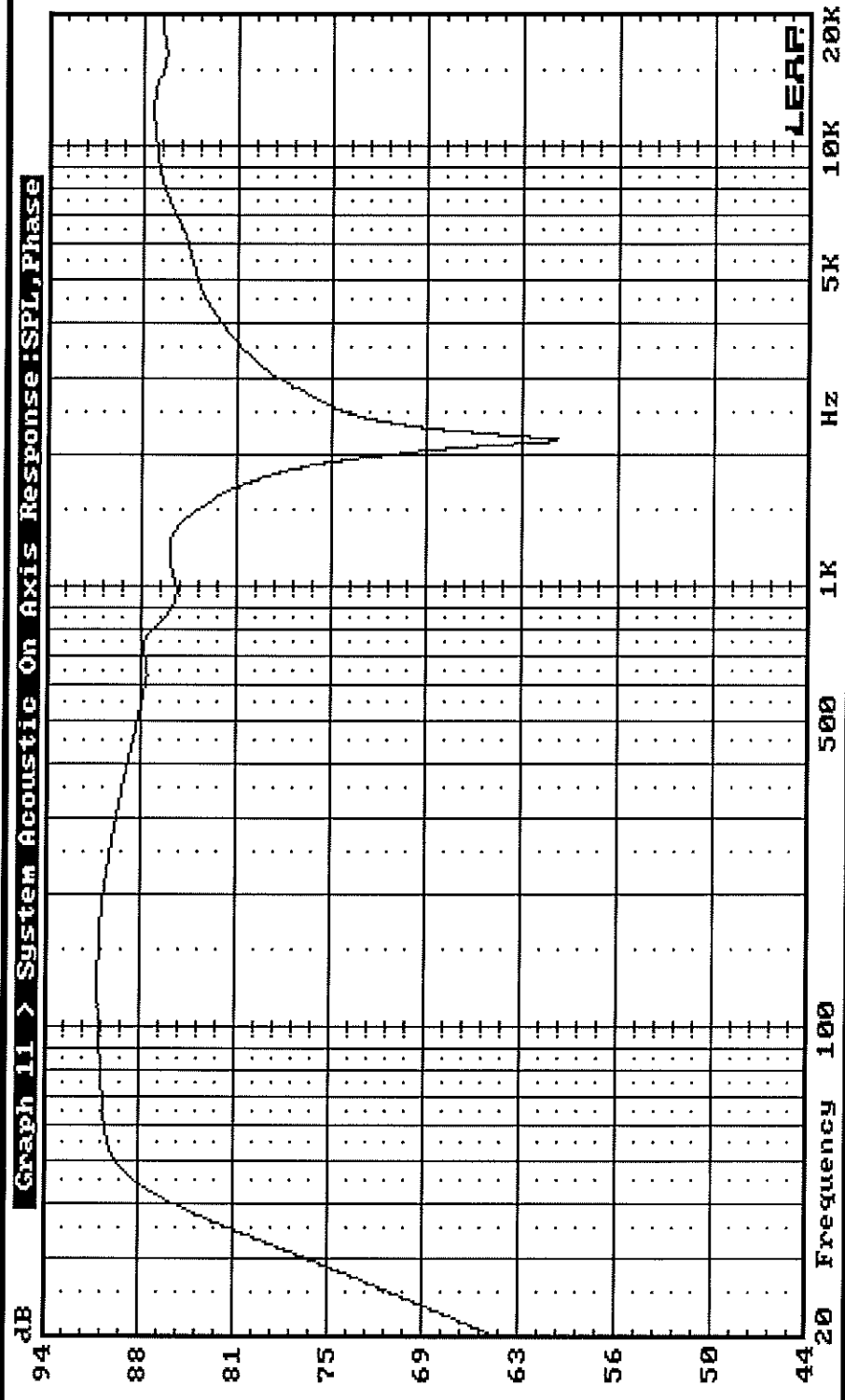
Loudspeaker Enclosure Analysis Program
Ver 4.60, (C)1994 LinearX Systems Inc

Oct 17:2014
Fri 2:21PM

DGL Library:
SILVER-4.DGL

— DGL Entry:14, Name:U20RC38-08 IZD SPLD
..... DGL Entry: 8, Name:XT25TG30/4 VZD SPLD

Graph 11 > System Acoustic On Axis Response:SPL,Phase





Loudspeaker Enclosure Analysis Program
Ver 4.60, (C)1994 LinearX Systems Inc

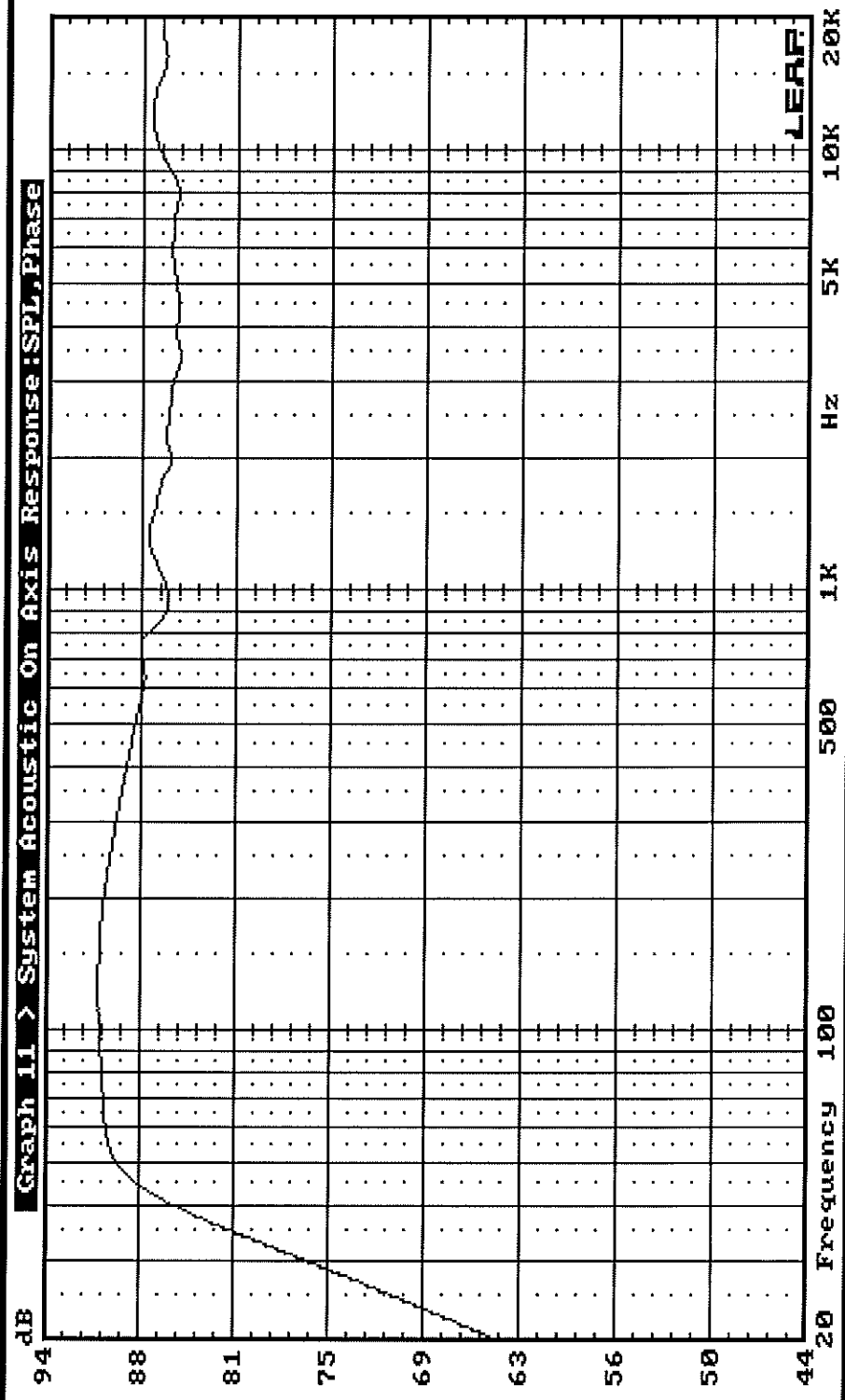
Oct 17, 2014
Fri 2:23PM

DGL Library:
SILVER-4.DGL

— DGL Entry: 14, Name: U20RC38-08 TZD SPLD

..... DGL Entry: 8, Name: XT25TG30/4 UZD SPLD

Graph 11 > System Acoustic On Axis Response: SPL, Phase





Loudspeaker Enclosure Analysis Program
Ver 4.60, (C)1994 LinearX Systems Inc

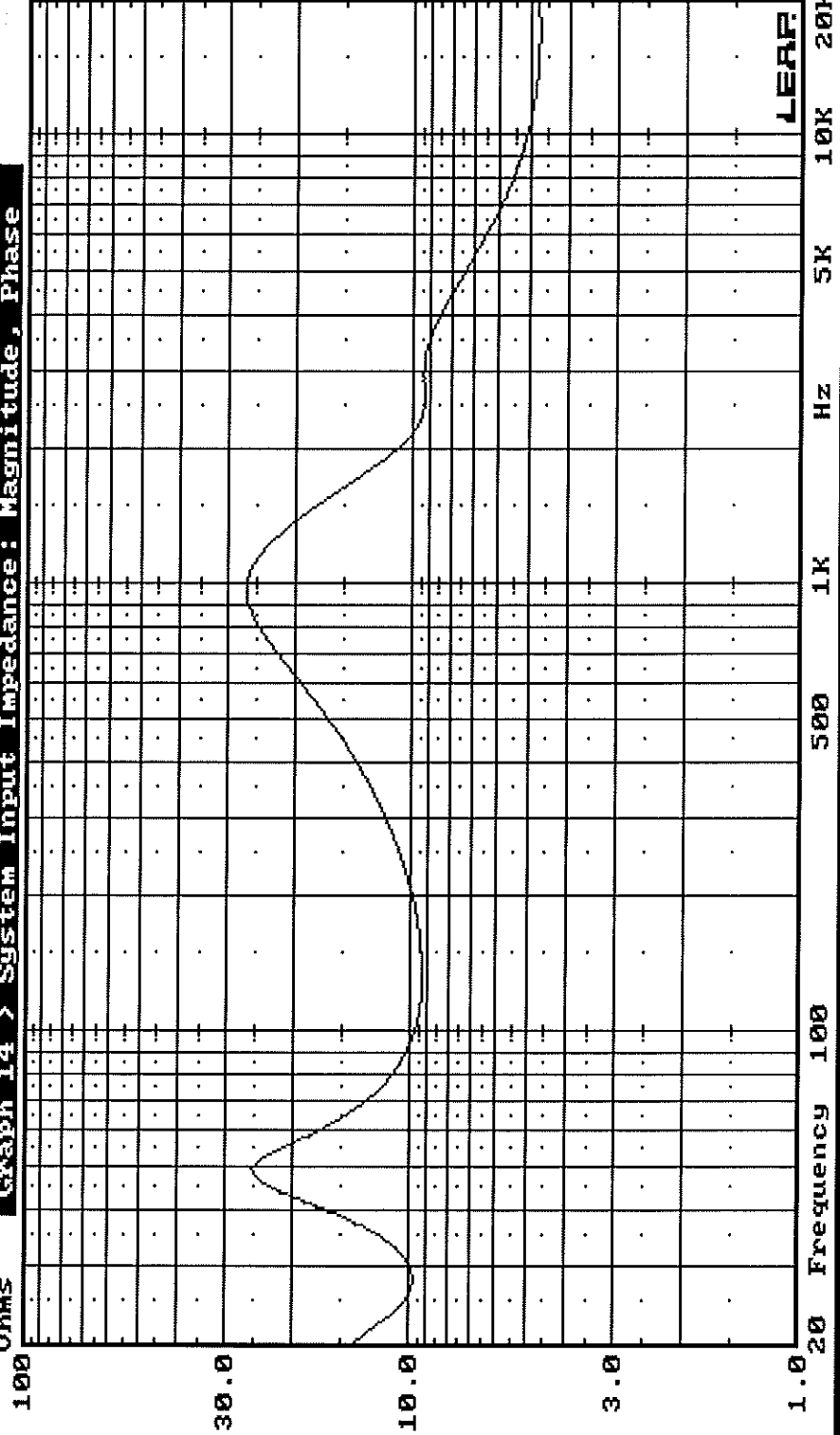
DGL Library:
SILVER-4.DGL

Oct 17 2014
Fri 2:23PM

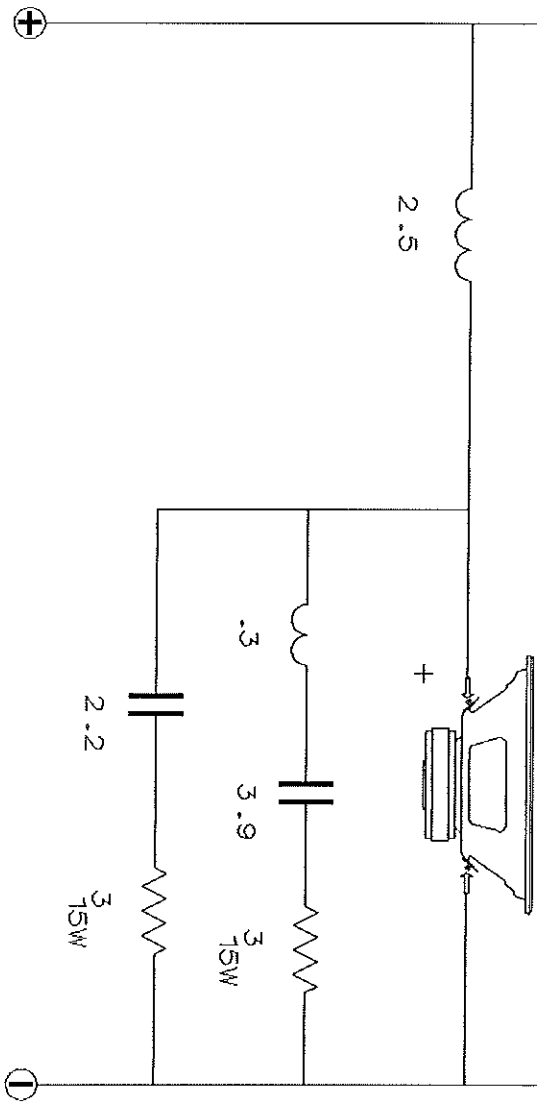
— DGL Entry:14, Name:U20RC38-08 IZD SPLD

..... DGL Entry: 8, Name:XT25TG30/4 VZD SPLD

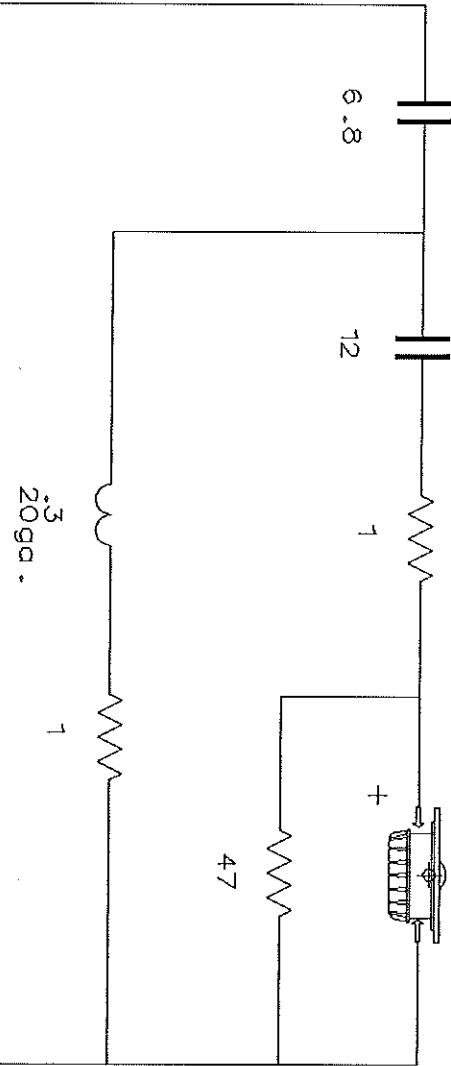
Ohms Graph 14 > System Input Impedance: Magnitude, Phase



CUSTOMER :



W20RC38/8



XT25TG30/4

Measured in

AP
TM

Modeled in

LEAP
TM