



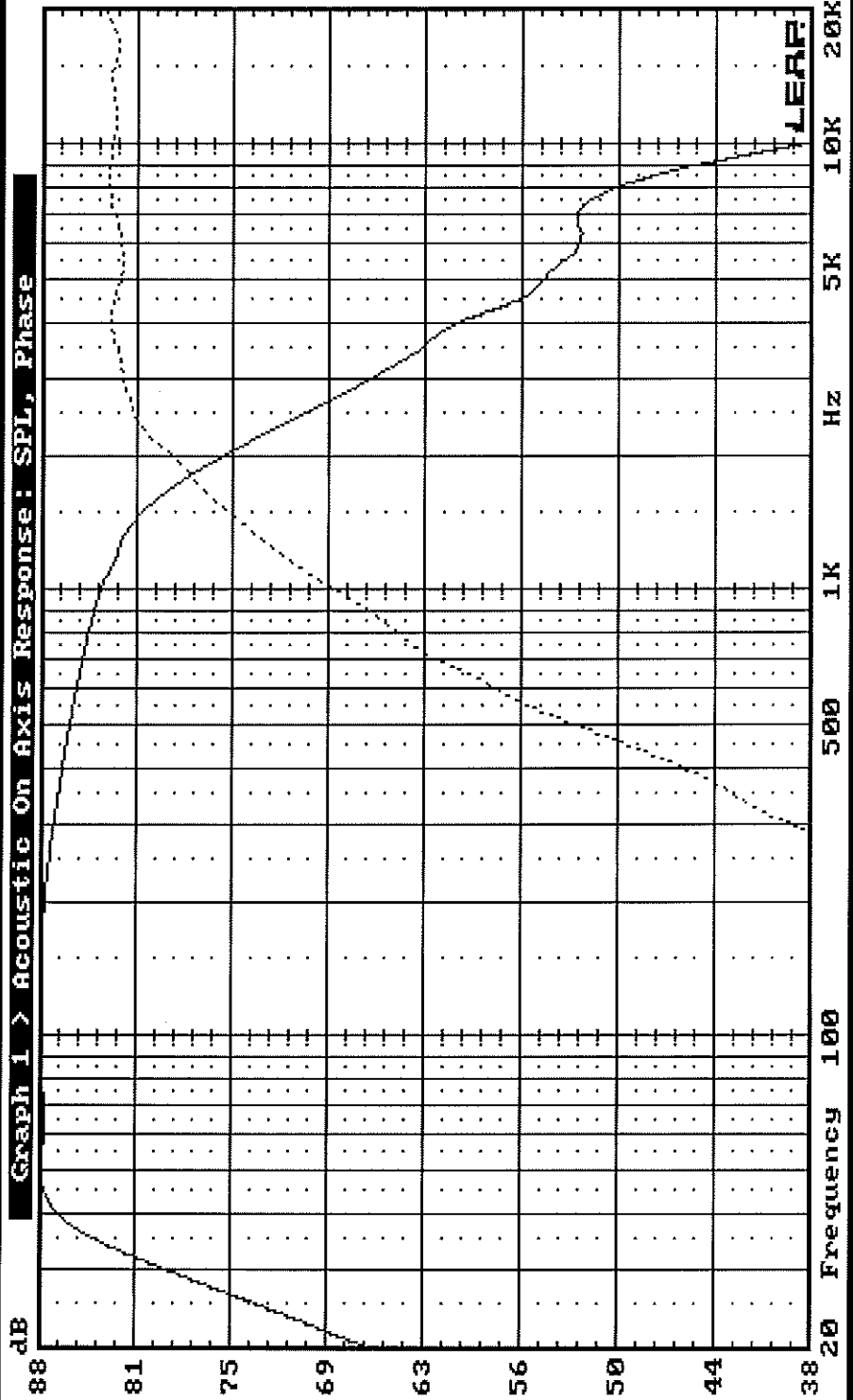
Loudspeaker Enclosure Analysis Program
Ver 4.60, (C)1994 LinearX Systems Inc

Feb 14 2013
Thu 8:21AM

DGL Library:
SEAS-14 ;DGL

— DGL Entry: 9, Name:U18EX-001 TZD SPLD

..... DGL Entry: 4, Name:T25CF-002 UZD SPLD



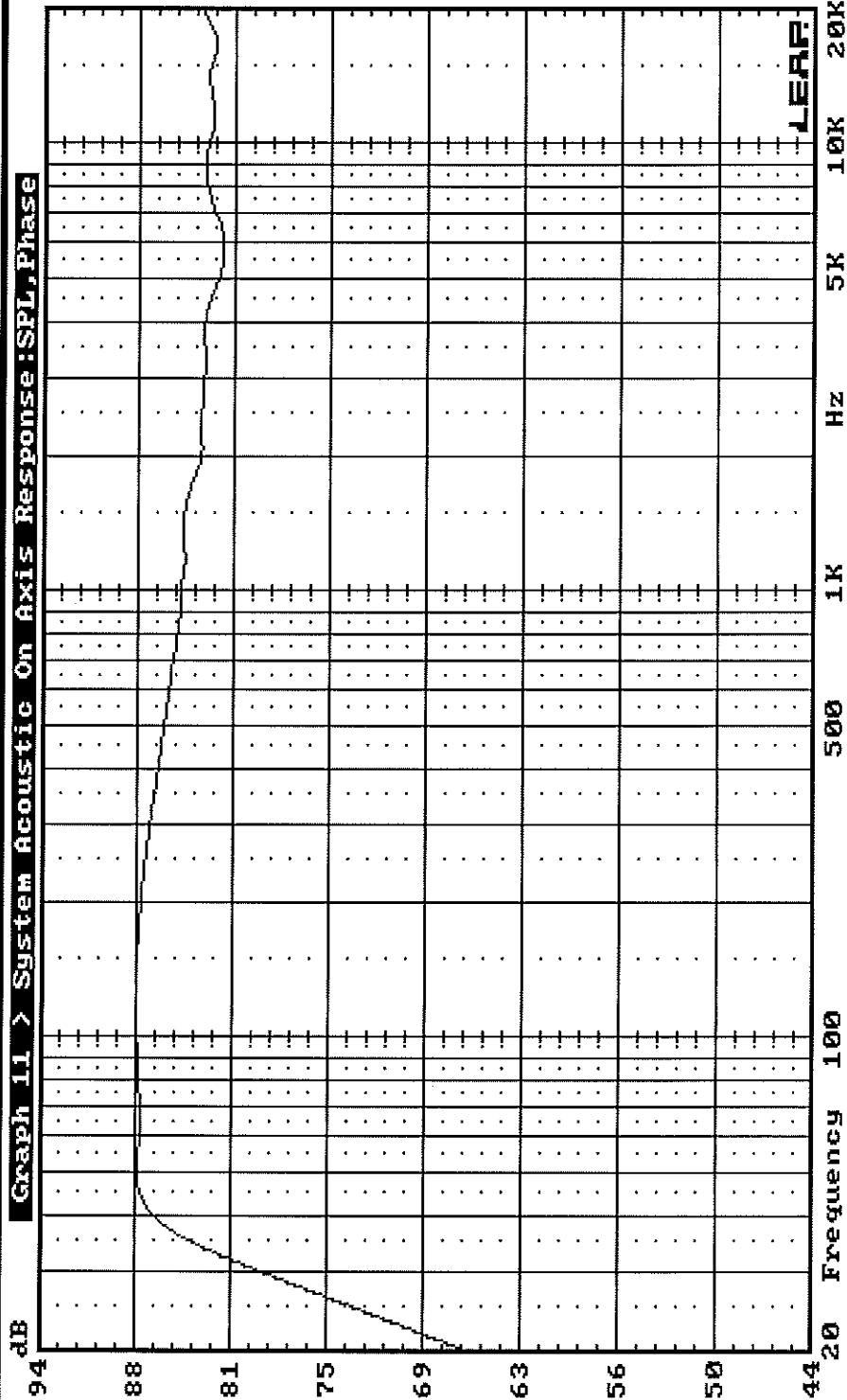


Loudspeaker Enclosure Analysis Program
Ver 4.60, (C)1994 LinearX Systems Inc

Feb 14:2013
Thu 8:21AM
DGL Library:
SEAS-14 .DGL

— DGL Entry: 9, Name: U18EX-001 TZD SPLD

..... DGL Entry: 4, Name: T25CF-002 VZD SPLD



W+T-



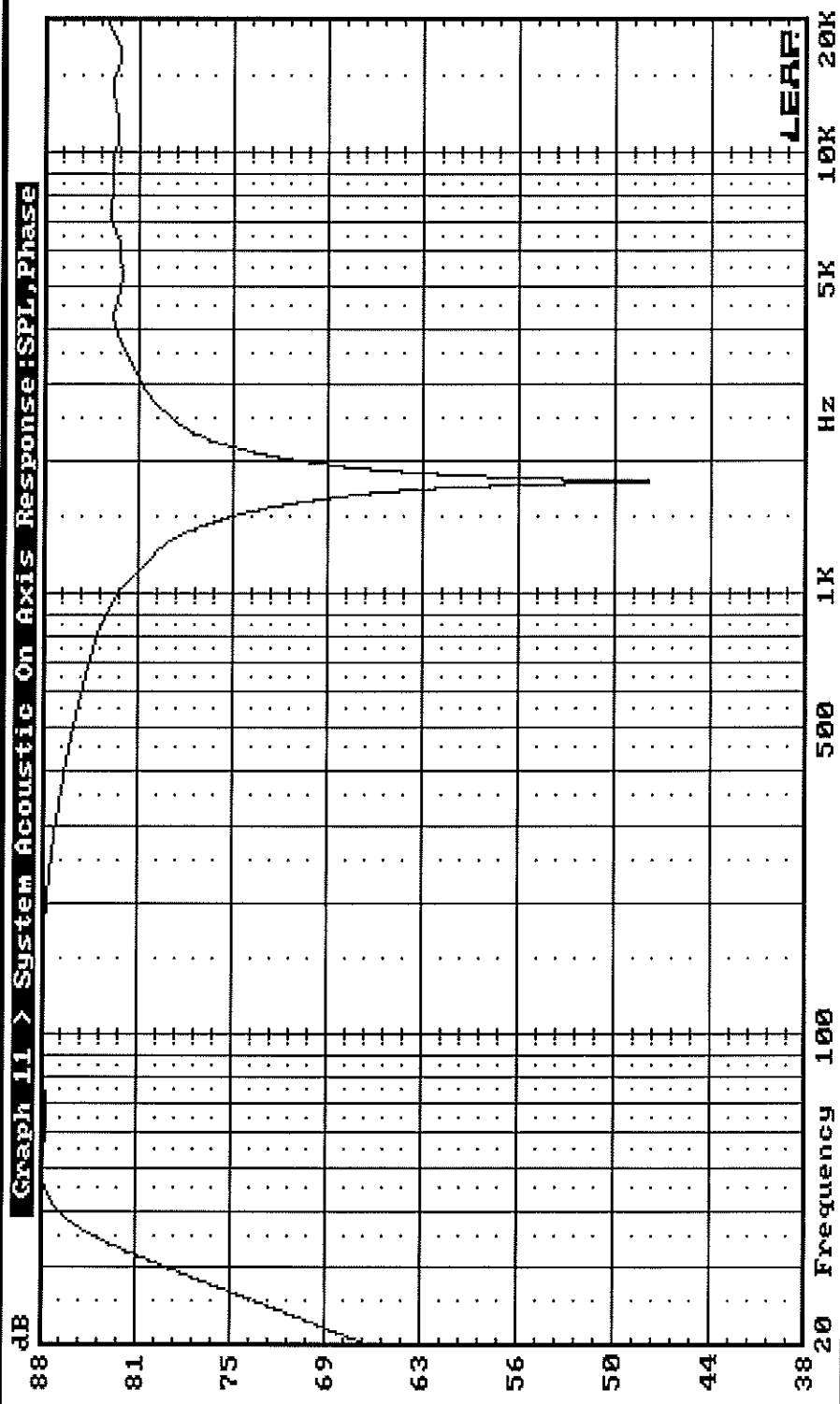
Loudspeaker Enclosure Analysis Program
Ver 4.60, (C)1994 LinearX Systems Inc

Feb 14:2013
Thu 8:21AM
DGL Library:
SEAS-14 .DGL

— DGL Entry: 9, Name: W18EX-001 TZD SPLD

..... DGL Entry: 4, Name: T25CF-002 U2D SPLD

Graph 11 > System Acoustic On Axis Response: SPL, Phase





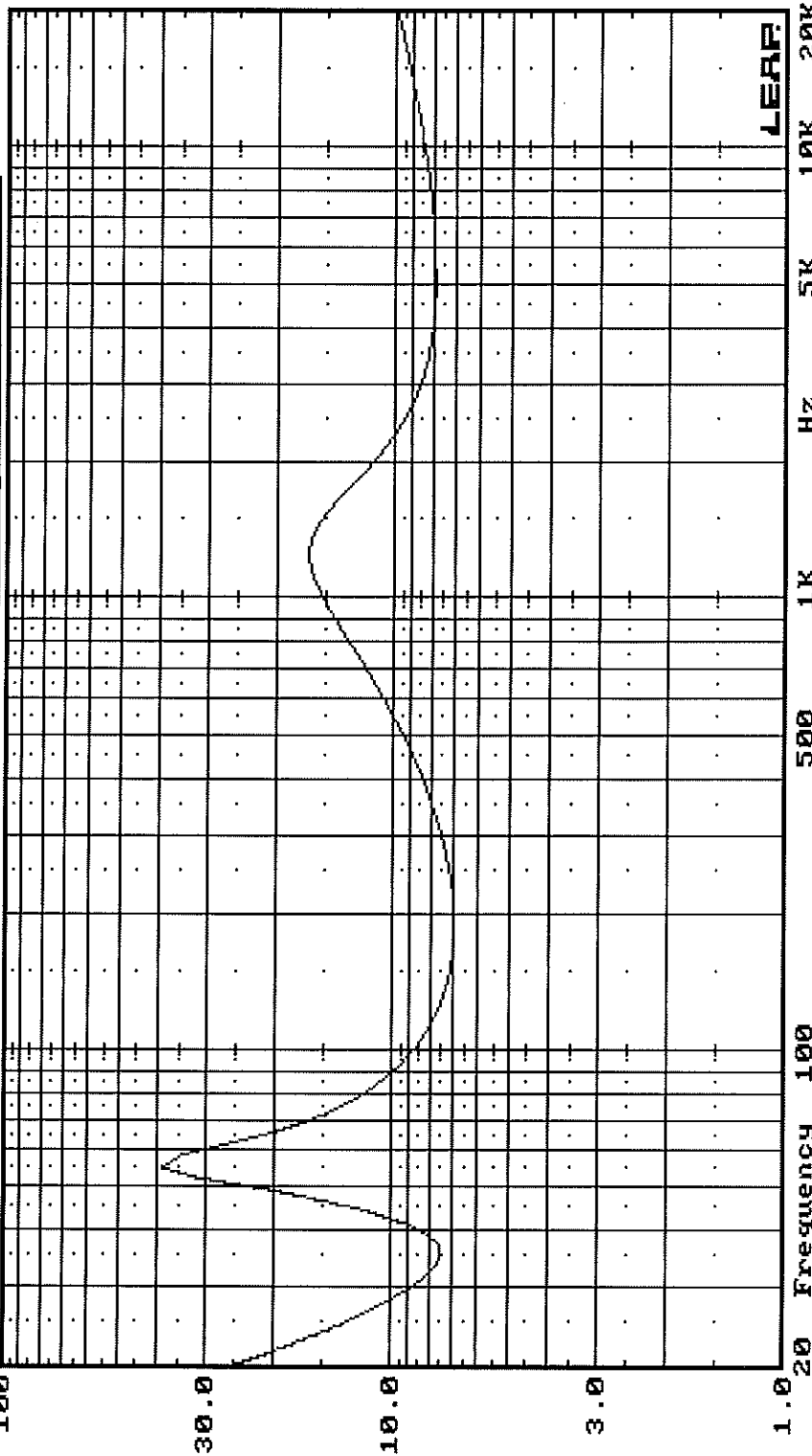
Loudspeaker Enclosure Analysis Program
Ver 4.60, (C)1994 LinearX Systems Inc

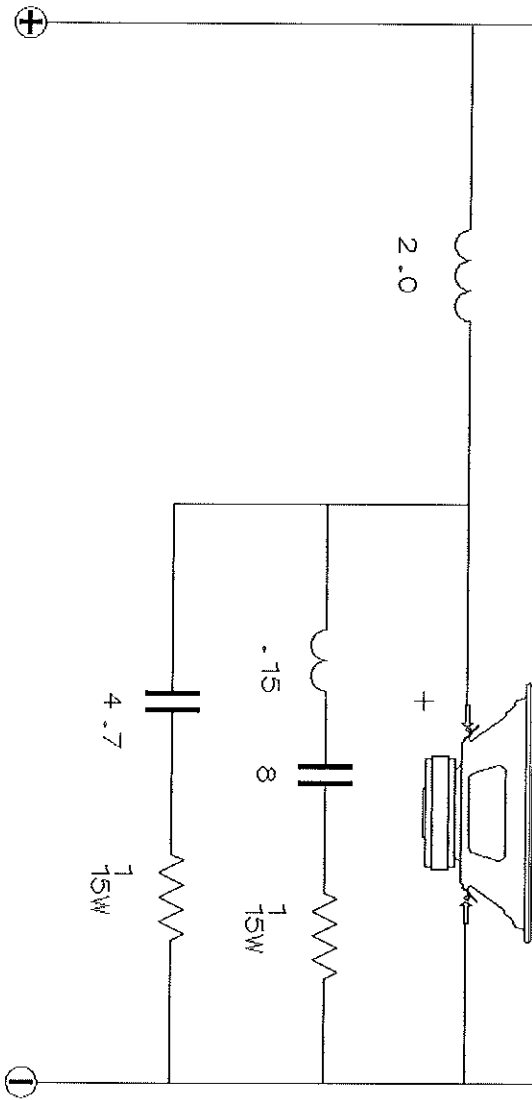
DGL Library:
SEAS-14 .DGL

Feb 14:2013
Thu 8:21AM

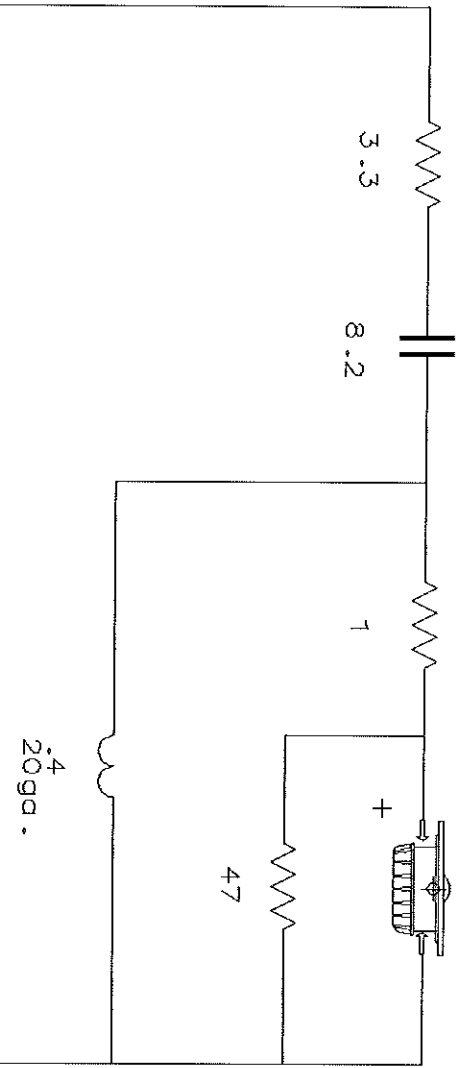
— DGL Entry: 9, Name: U18EX-001 TZD SPLD
..... DGL Entry: 4, Name: T25CF-002 UZD SPLD

Ohms Graph 14 > System Input Impedance: Magnitude, Phase





W 18EX-001



T25CF-002

