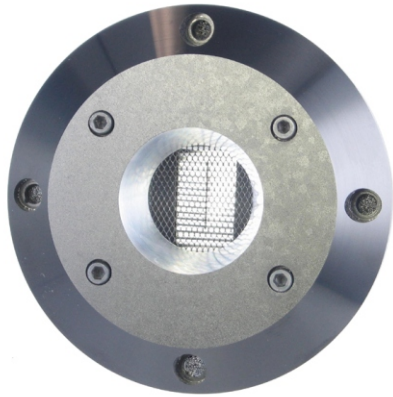




# LCY SPLIT RIBBON TWEETERS

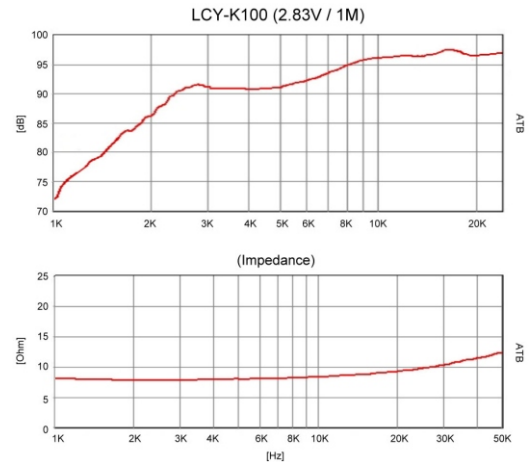
The LCY Ribbon tweeter is based on technology well proven by audio pioneers for over half a century but is innovatively designed to satisfy the sophisticated demands of the digital era.

The LCY has a unique design employing twin ribbons of half the length of conventional ribbons in order to control vertical plane dispersion. Thus it reproduces both vertically and horizontally as effectively as voice-coil operated dome tweeters but with the accuracy, elegance and refined timbres of ribbon-tweeter technology. Magnetic flux density is enhanced by the use of our own neodymium magnet system and a sophisticated transformer with parallel multi-wiring oxygen free copper (OFC) has been adopted for superior frequency and power handling and optimal size.



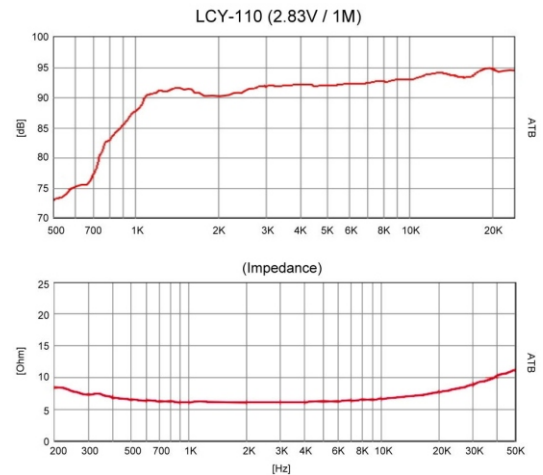
## LCY-K100

Frequency Response: 7kHz-100kHz  
Sensitivity: 95dB (2.83V@1M)  
Nominal Impedance: 8 Ω  
Magnet Type: Neodymium  
Ribbon Effective Area: 375 mm<sup>2</sup>  
Ribbon Thickness: 0.006mm  
Ribbon Length: 25mm  
Nominal Power Handling: 200W(18dB/7kHz)  
Flange Diameter: 90mm  
Cut Out: 65mm x 43mm or 70mm Ø  
Depth: 67mm  
Flange Thickness: 5mm  
**Price Each: \$156.00**



## LCY-110

Frequency Response: 2kHz-60kHz  
Sensitivity: 92dB (2.83V@1M)  
Nominal Impedance: 8 Ω  
Magnet Type: Neodymium  
Ribbon Effective Area: 740 mm<sup>2</sup>  
Ribbon Thickness: 0.006mm  
Ribbon Length: 38mm  
Nominal Power Handling: 150W  
Weight: 1.05kg  
Flange Diameter: 110mm  
Cut Out: 86mm x 58mm or 99mm Ø  
Depth: 86mm  
Flange Thickness: 10mm  
**Price Each: \$199.00**



## LCY-130

Frequency Response: 1.8kHz-60kHz  
Sensitivity: 92dB (2.83V@1M)  
Nominal Impedance: 8 Ω  
Magnet Type: Neodymium  
Ribbon Effective Area: 740 mm<sup>2</sup>  
Ribbon Thickness: 0.006mm  
Ribbon Length: 38mm  
Nominal Power Handling: 150W  
Weight: 1.15kg  
Flange Diameter: 130mm  
Cut Out: 86mm x 58mm or 99mm Ø  
Depth: 90.5mm  
Flange Thickness: 7.5mm  
**Price Each: \$210.00**

