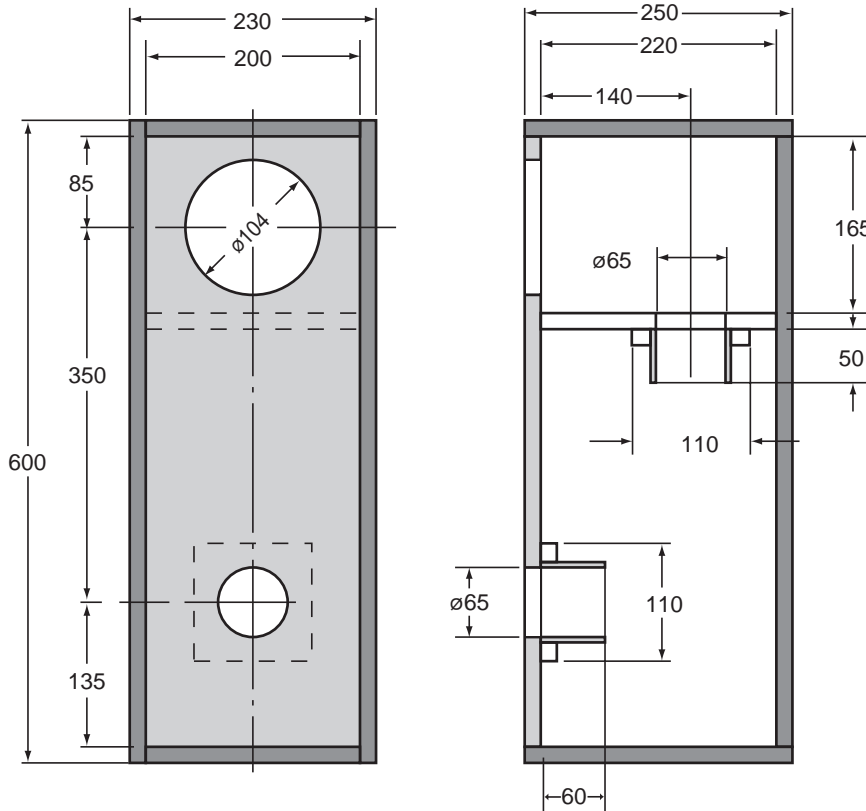


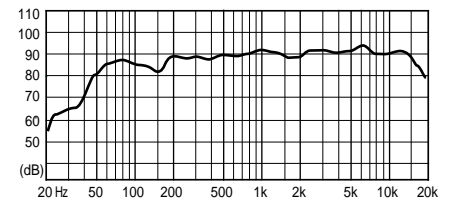
FE127E

Recommended Double Bass Reflex Type Enclosure

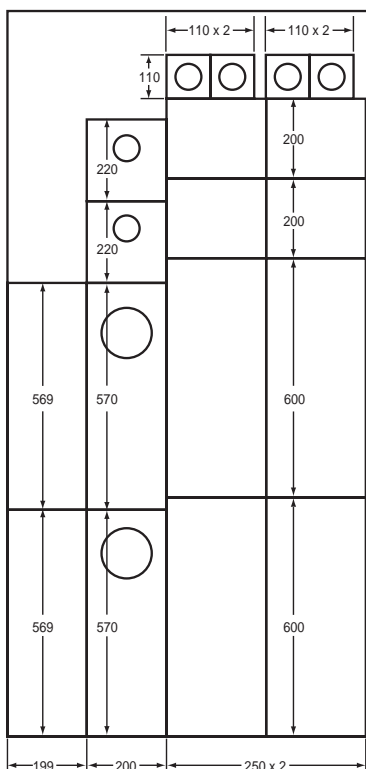


unit:mm / 15mm thick / fb1 = 120Hz (1st), fb2 = 53Hz (2nd)

- Shown is an example of a FE127E double bass reflex type enclosure.
- Multiple bass reflex ports reproduce lower frequency.
- The first port is tuned (Fb) to 120Hz and second port to 53Hz.



- Avoid too low a tuning frequency to maintain good power handling.



Recommended Standard Bass Reflex Type Enclosure

Example of FE127E standard bass reflex type enclosure. Internal volume is 10 liters tuned to approximately 71Hz (Fb).

