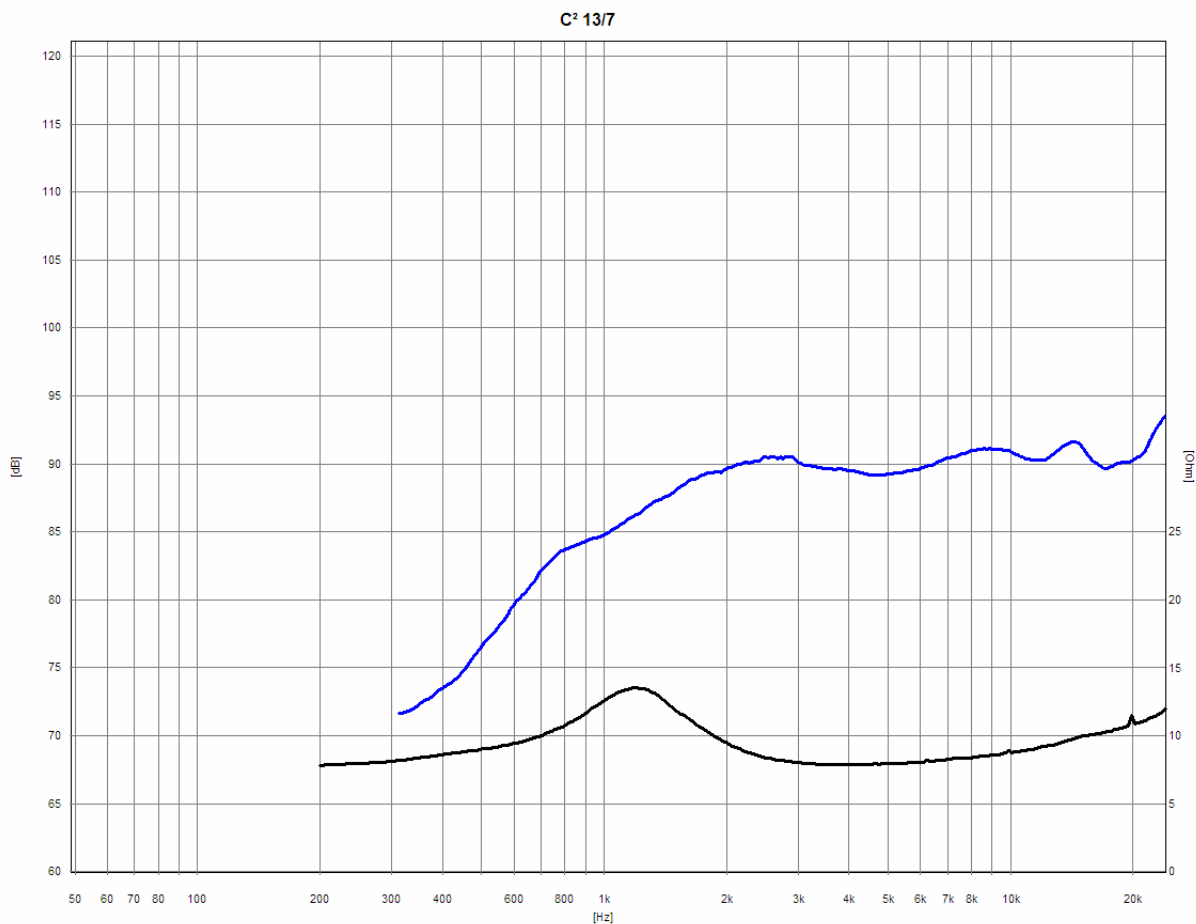


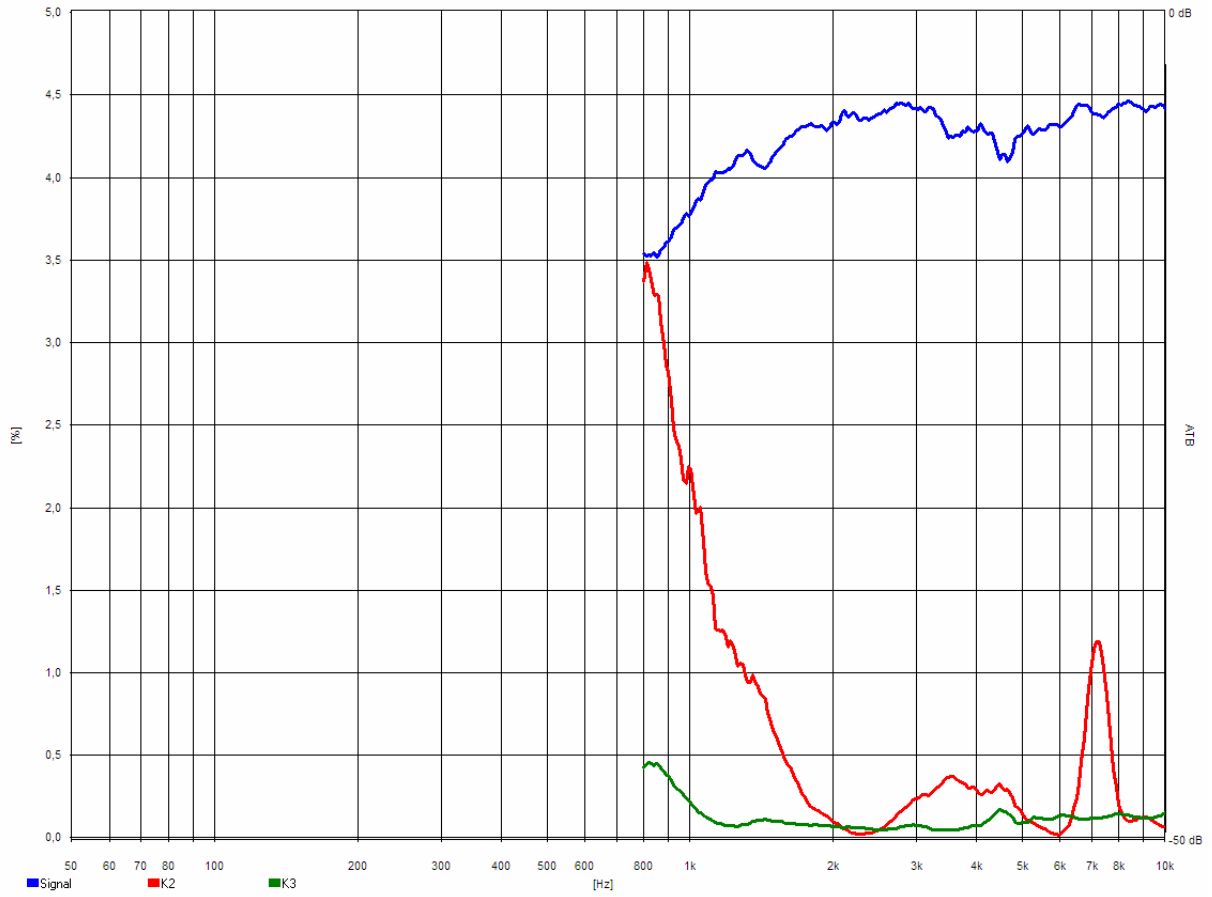
# ACCUTON - C<sup>2</sup>13-6 - preliminary data

[www.accuton.com](http://www.accuton.com)

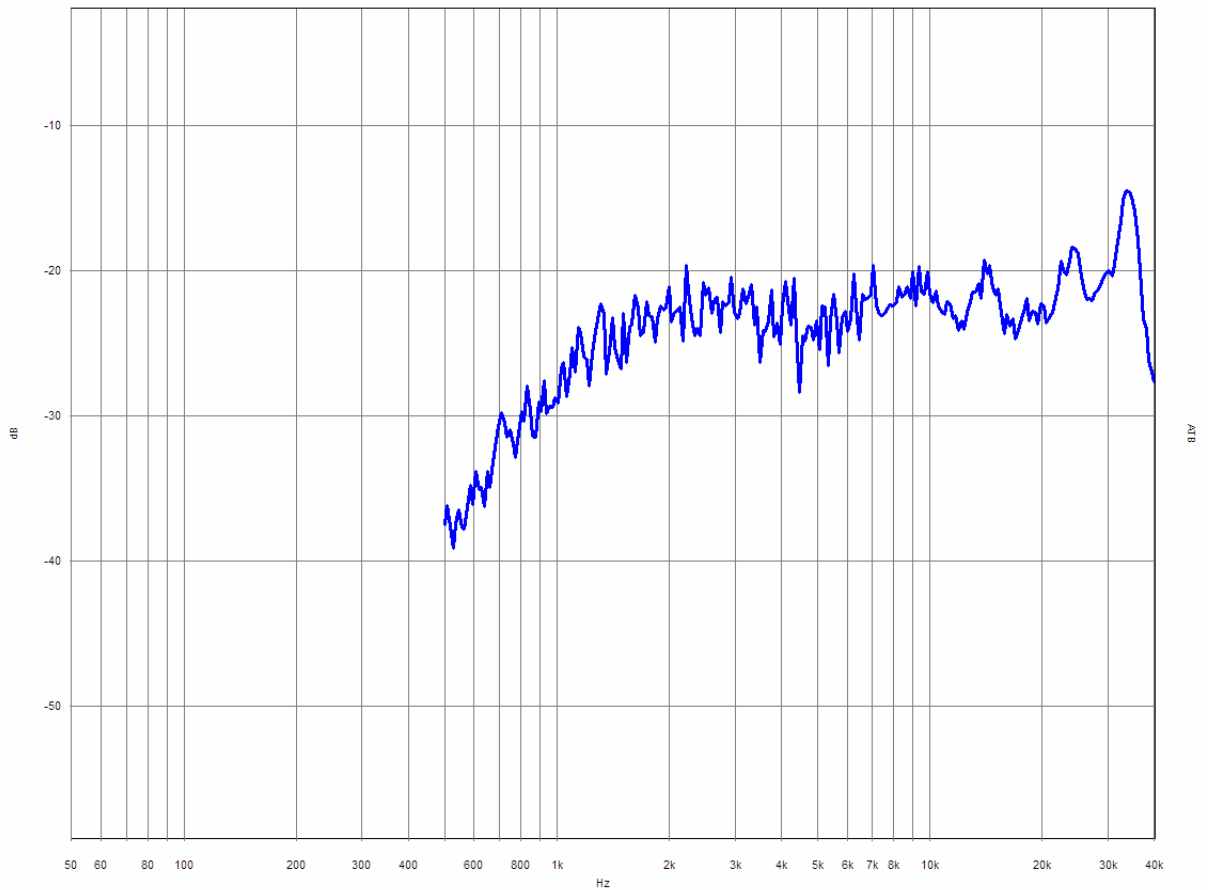
- 25 mm ceramic cone like C<sup>2</sup>12-6
- frontplate fully compatible with C<sup>2</sup>12
- high efficiency – 92 dB / 2.83 Volt
- high energy distribution
- new 4 mm underhung Neodymium magnet system
- extremely low distortion even at high volume
- also 4 Ohm type available
- significantly reduced ferrofluid filling



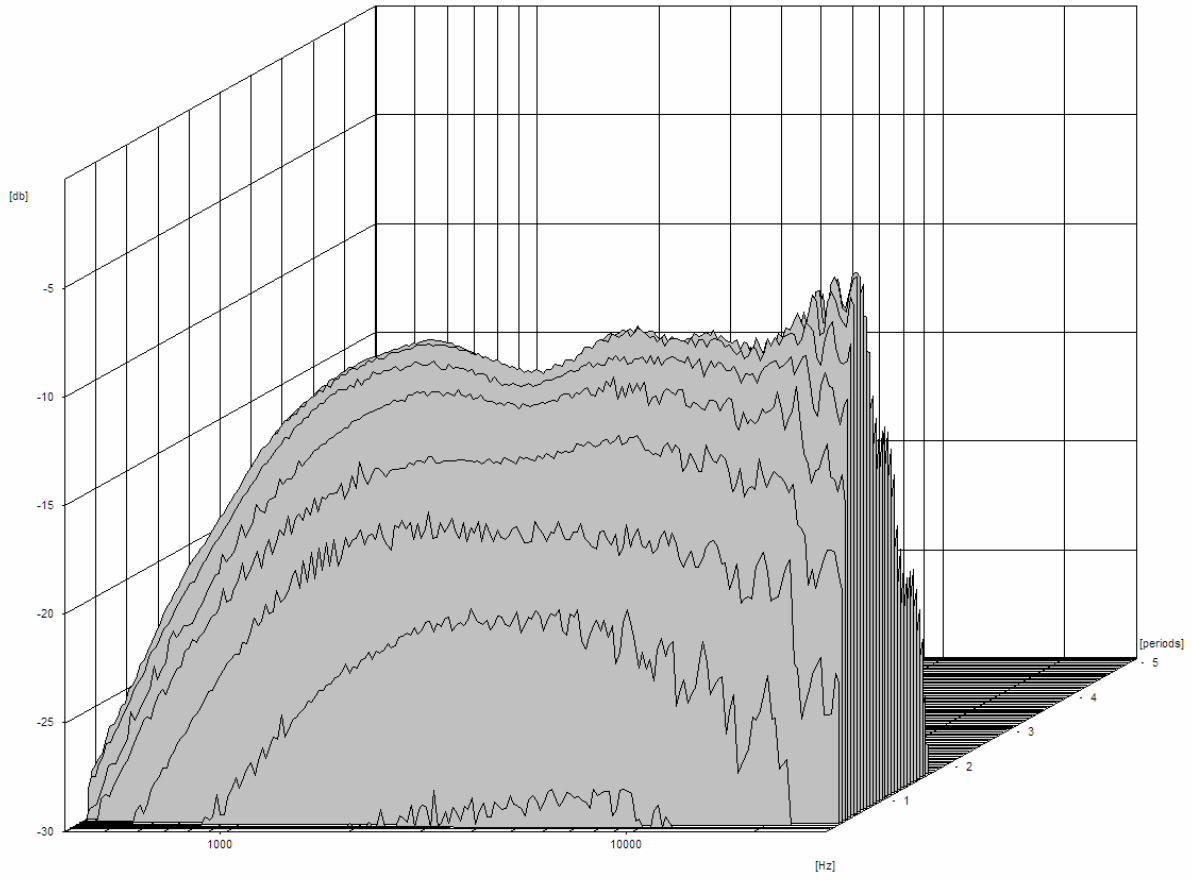
C<sup>2</sup> 13/7 ( 6,9 Ohm, 2,63V, 1 Watt )



C<sup>2</sup> 13/7



C<sup>2</sup> 13/7



C<sup>2</sup> 13/7

